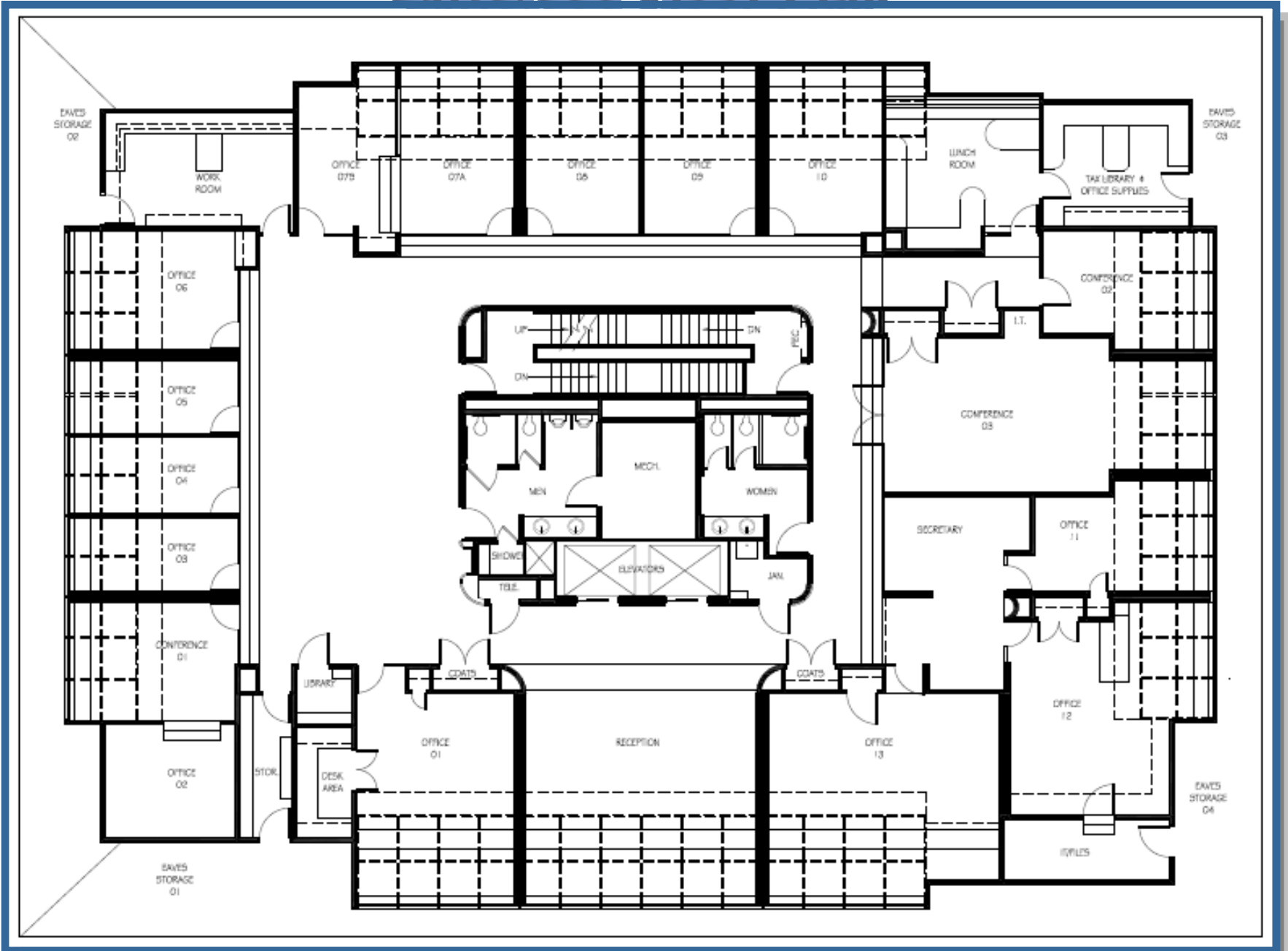


# Suite 500 Floor Plan



# Greentree Commons

381 Mansfield Avenue • Pittsburgh, PA 15220



*Greentree Commons is an iconic 5 story Class "A" office building incorporating signature atrium glass in all offices and a wood accented exterior that sets it apart among Greentree buildings, conveniently located on the Parkway West corridor (I-376) that connects Pittsburgh's Central Business District with I-79 and the Pittsburgh International Airport. The building is in close proximity to a variety of restaurants, hotels and shopping.*

*Greentree Commons boasts numerous interior and exterior updates, fresh landscaping and ample free parking. The building features beautifully appointed lobbies and entrances, park-like landscaping, picnic area, newer parking lot, 24/7 camera surveillance system, newer HVAC mechanical systems as well as upgraded modern elevators.*

*Greentree Commons also has a ChargePoint commercial charging station for use by building tenants with electric vehicles.*

## Key Features

- All offices with Atrium style glass
- Signature exterior wood-centric
- Within walking distance to 3 area hotels plus bus lines
- Close to many local restaurants and shopping districts
- Competitive rates and lease terms
- Full-service lease includes all utilities, nightly cleaning, maintenance and landscaping
- Ample free parking
- Grounds include park-like setting with picnic tables, etc.



## Sublet Opportunity Available

Suite 500 furnished floor layout consisting of 8,888 rentable square feet

**For More Information Contact:**

**Daniel Falcioni**  
**Office #: (724) 942-4045**

**[www.westpointrealty.net](http://www.westpointrealty.net)**

## Building Tenants

- Hawthorne Group
- Posner Foundation
- Railroad Development Corp.
- G.W. Peoples Contracting
- PenTrust Real Estate Advisory Services Inc.
- EWA LLC
- Lee Hecht Harrison LLC
- Alarmax Distributors Inc.
- Prolink Staffing Services
- The Penn Mutual Life Insurance Company

Broker License #RB040526A  
Agent License #RM422133